



Grapevine Villas



Osmond, NE

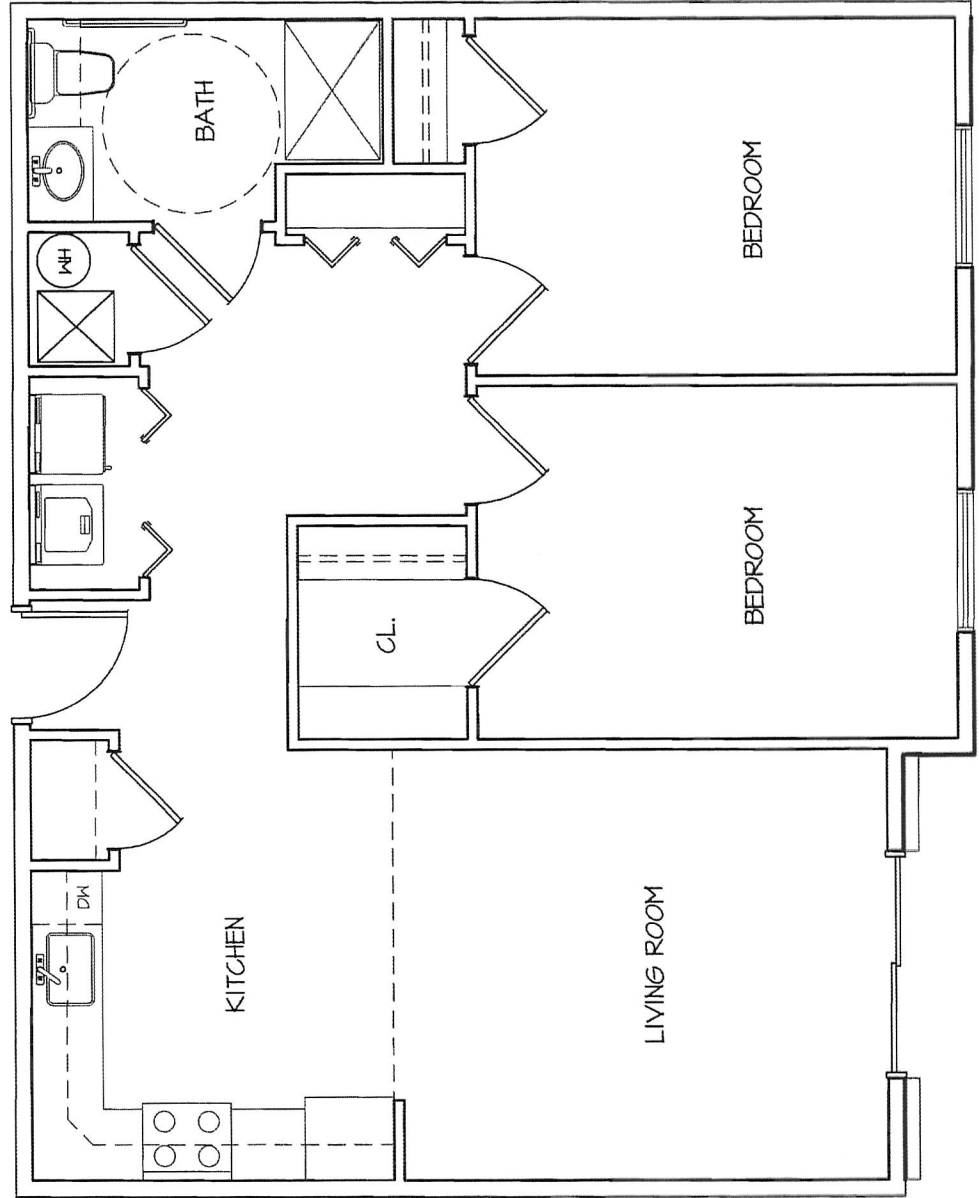


Osmond, Nebraska

Tenant Information

- ◆ 870 Sq. Ft. Living Area
- ◆ Rent \$895.00
- ◆ Indoor/Outdoor Locked Entrances
- ◆ Spacious 2-Bedroom Apartments
 - Master Bedroom
 - Walk-in Closet with Shelving
 - Ceiling Fan
 - Carpet
 - Guest Bedroom
 - Standard Closet with Shelving
 - Could Serve as a Den or Sewing Room
 - Carpet
- ◆ Utility Closet with Bi-fold Doors
 - Washer and Dryer Included
 - Shelving for Hanging and Storing Items
- ◆ Kitchen Area
 - Appliances Included
 - Pantry Closet with Shelving
 - Corner Lazy Susan
 - Vinyl Floor Covering
- ◆ Bathroom
 - Shower with Seat and Grab Bars
 - Handicap Accessible Sink
 - ADA Approved Toilet
 - Lighted Vanity Mirror with Storage Unit
- ◆ Linen Closet
- ◆ Inside Mail Delivery
- ◆ Private Patio
- ◆ One Stall Garage
- ◆ Party Room
- ◆ All Electric
- ◆ Water/Sewer/Garbage included in Rent
- ◆ Maintenance Free

Apartment Floor Plan



For More Information Contact:

Jennifer Jensen

Cornerstone Associates

P.O. Box 220

Osmond, NE 68760

(402) 748-3661

jbessmer@cornerstone-nebraska.com



Apartment Floor Plan

